



SPECIFICATION



产品名称:

Product Name : LED SPOT LIGHT

产品型号:

Part No: 7WGU1065

批准号码:

Approval No : _____

V1.0

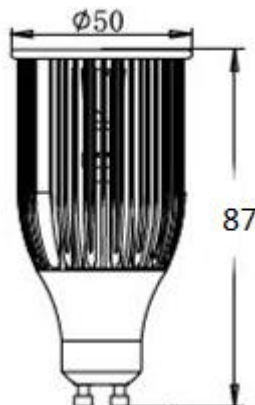


spot light series is aesthetically pleasing, energy saving and environmentally friendly. In addition, it is long lasting. All this makes LED spot light a preferred optoelectronic product. As the LED spot light is CE and ROHS compliant, customers can feel secure in purchasing and using it.

1、 Features

- COB led source, light efficiency 80lm/w
- Particular reflector ,high efficiency>91%
- Anti-glare design
- Unique and stylish in look
- Advanced thermal management technology

2、 Product Dimensions:





3 XX SOCKET

16: MR16 10: GU10 27: E27 26: E26

4 XX product code series

5 XX LED POWER

01 :3W 03:3W 05:5W 07:7W 09:9W 12: 12W

6 Color temparture

WW:2700-3300K PW:6000-6500K

7 other Function

D: dimmer

4、 Specification

Product type	7WGU1030	7WGU1065
Color	WW	PW
Input voltage(V)	AC100-240V 50/60Hz	
Power Consumption(W)	7W	
Power Factor	>0.95	
Beam Angle(°)	60	
CRI	75	75



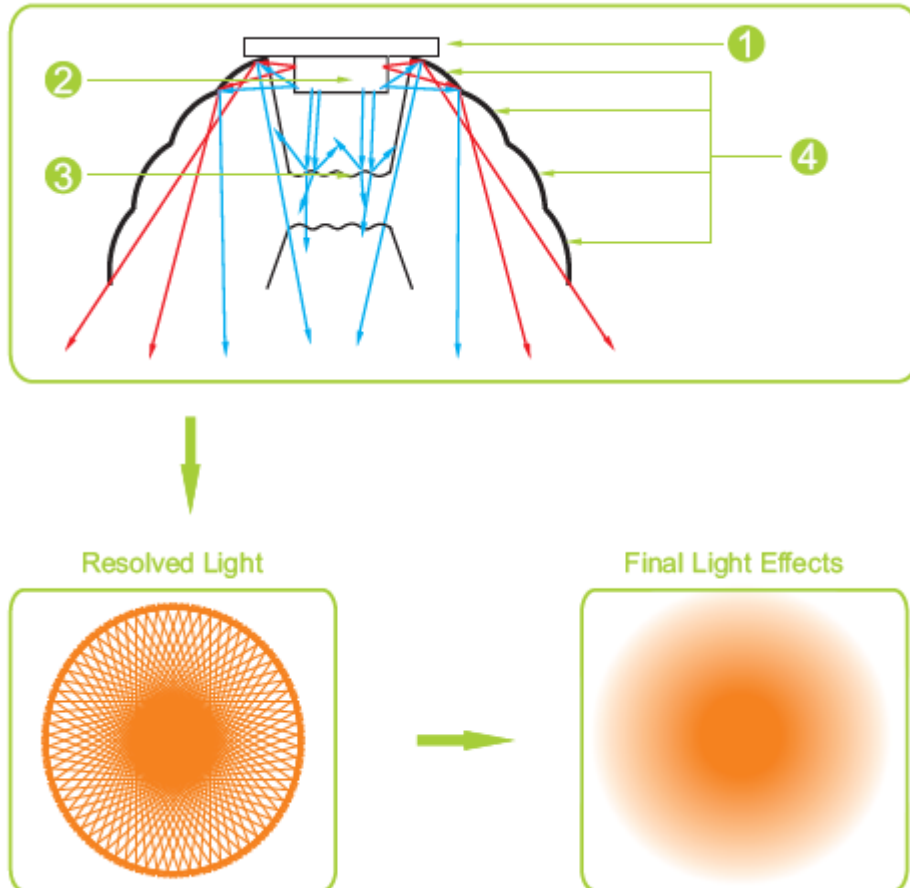
Luminous Flux(lm)	463	587
Dimmable	No	
Socket	GU10	
Lifetime(hrs)	40000	
Net weight(kg)	0.08	

5、 Optical Theory

lens series, an unique and effective solution for LED spot design.

- Structure
 - ① COB LED source
 - ② LED Chips
 - ③ Fly Eye Design
 - ④ Scales

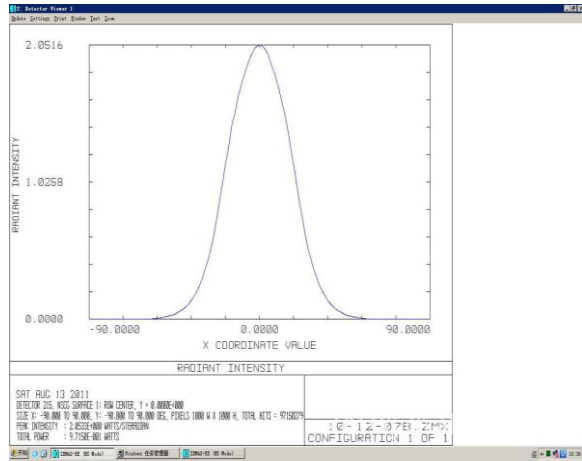
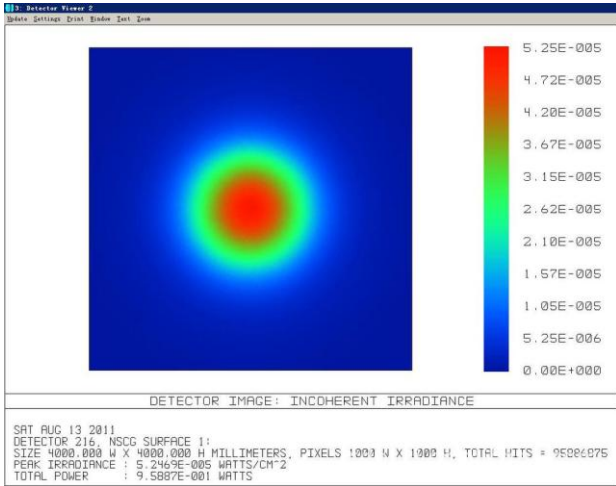
Filed



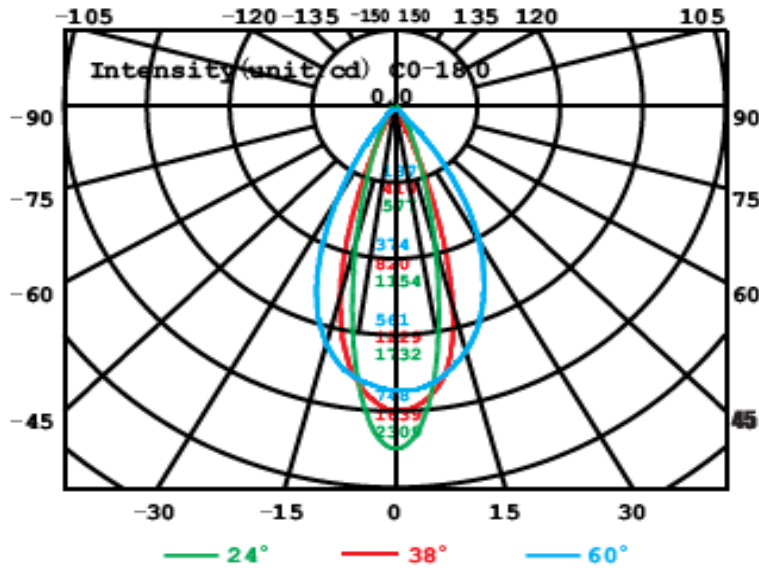
Emitting area after reflector, light's image formed on Retina is large as a whole, while light ray is soft and evenly distributed. This minimizes the stimulation to optic nerves, thus greatly protective for human eyes' health.

- Light Facula Illustration

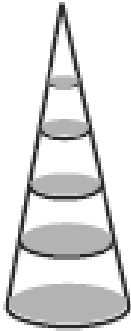
Filed



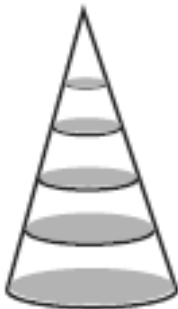
6、 Optical Parameters



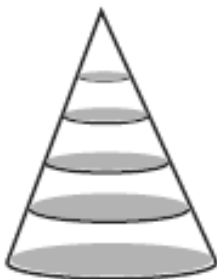
- AAI Figure



BEAM ANGLE 24 DEG WW		
Distance(m)	Max.E(lux)	Diameter(m)
1	1105	0.34
2	275	0.68
3	130	1.02
4	75	1.36
5	65	1.70



BEAM ANGLE 38DEG WW		
Distance(m)	Max.E(lux)	Diameter(m)
1	790	0.6
2	205	1.2
3	105	1.8
4	65	2.4
5	50	3.0



BEAM ANGLE 60DEG WW		
Distance(m)	Max.E(lux)	Diameter(m)
1	365	1.05
2	115	2.10
3	60	3.15
4	40	4.20
5	30	5.25



7、 Operation and Storage Condition

- Operation Ambient Temperature -20 to +40°C, Relative Humidity 20~90%
- Input Voltage 100~240V AC, 50/60Hz
- Storage Ambient Temperature -40 to +85°C, Relative Humidity 5~95%

8、 Quality Warranty

- Quality guarantee is based on storing, installing ,operating and maintaining correctly in the normal operation condition.
- It is not included in our maintaining range when installing inappropriately, breaking the operating rules, and leading to the products damaging.
- Our company will maintain the right to either repair, parts replacing,or products exchange during the quality warranty period.

9、 Safety Note

- No pressing or striking
- Transport and handle carefully
- Pay attention to the voltage before using
- Indoor use only
- No twisting when power is on